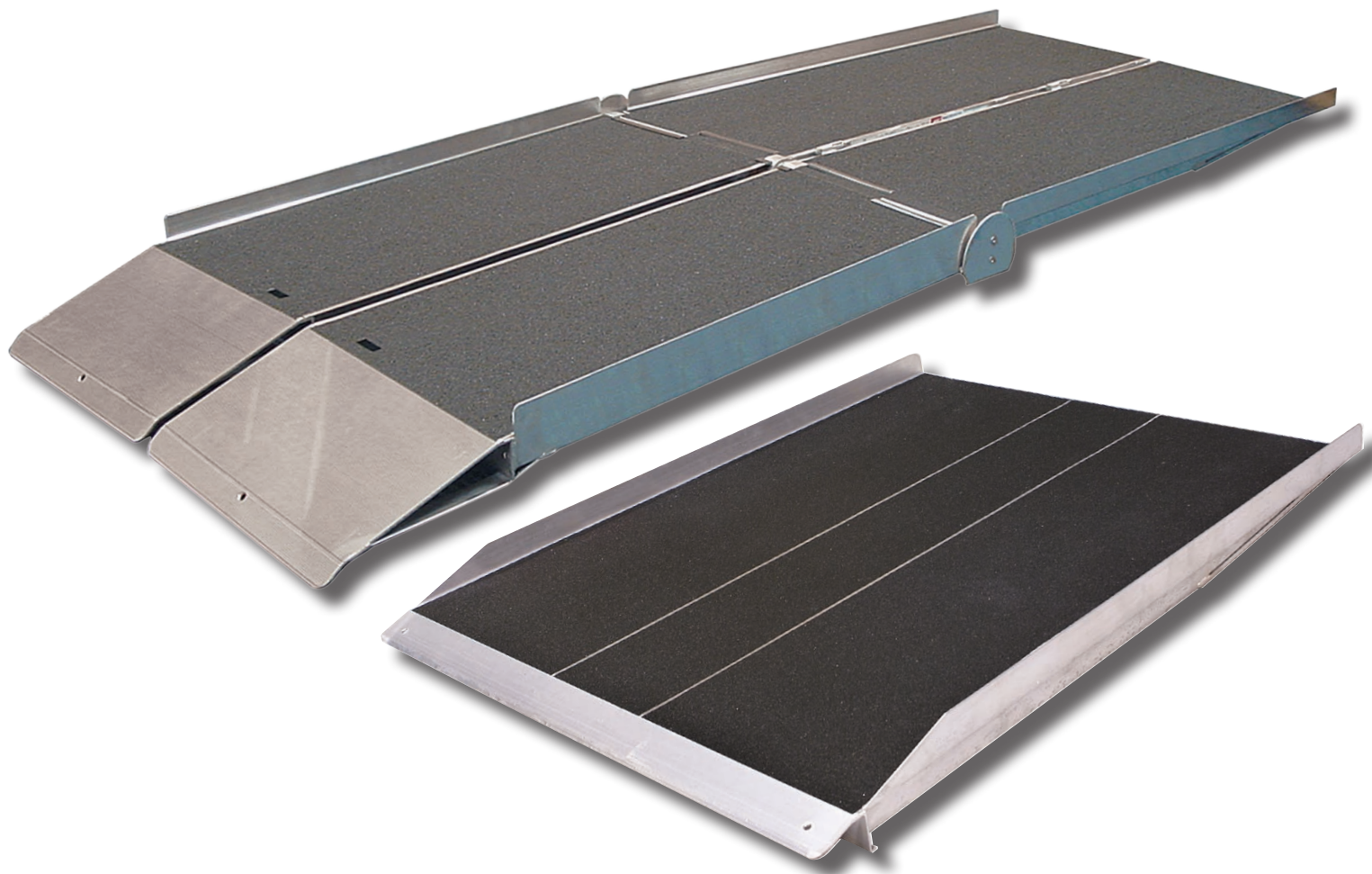


Mobility Ramps

Portable Aluminium



PORTABLE FOLDING AND SOLID MOBILITY RAMPS

Provide access to the home or office or up and down curbs for wheelchairs and mobility scooters.

These ramps are all portable and can be moved by one person. They are constructed from high grade aluminium and have a high traction non skid surface.

Give yourself the freedom to become more independent and negotiate steps with confidence.

MELROSE MOBILITY RAMPS

Melrose Mobility ramps are constructed from high grade aluminium for light weight, durability and corrosion resistance. A high traction tape is applied to the surface providing a non skid surface even when wet.

They can be used by wheelchairs or mobility scooters and are designed to support up to 270 kg.

The folding ramps fold up to be carried like a suitcase, and can be stored in a closet or storeroom.

Melrose Mobility ramps are constructed to the highest European CE standard.



Solid ramp



Multi fold ramp



Single fold ramp

Table to determine ramp length

RISE	RAMP LENGTH								
	2' 610mm	3' 914mm	4' 1219mm	5' 1524mm	6' 1829mm	7' 2134mm	8' 2439mm	10' 3048mm	12' 3658mm
3" 76mm	7.2 deg	4.8 deg							
4" 102mm	9.6 deg		4.8 deg						
5" 127mm		8 deg		4.8 deg					
6" 152mm		9.6 deg			4.8 deg				
7" 178mm			8.4 deg			4.8 deg			
8" 203mm			9.6 deg				4.8 deg		
9" 229mm				8.6 deg				4.3 deg	
10" 254mm				9.6 deg				4.8 deg	
12" 305mm					9.6 deg				4.8 deg
14" 356mm						9.6 deg			
16" 406mm							9.6 deg		
18" 457mm								8.6 deg	
20" 508mm								9.6 deg	
22" 559mm									8.7 deg
24" 610mm									9.5 deg

RAMP SELECTION GUIDE

- NEVER exceed a slope greater than 9.6 deg with an occupied chair or scooter
- ALWAYS make sure that the top of ramp is secure before using. It may be necessary to anchor top of ramp to landing surface with steel pins provided.
- ALWAYS follow manufacture recommendations for chair or scooter
- Slope recommendations
 - 1:12 Slope (4.8 deg)
Recommended slope for home and commercial ramps that most wheelchair users can push up and down by themselves
 - 1:6 Slope (9.4 deg)
Acceptable slope for a ramp used by a wheelchair user with an assistant

